



NexxLevel Federation RULES

2K 25



NexxLevel Edition:

- Both Myplayer and Pro Players allowed

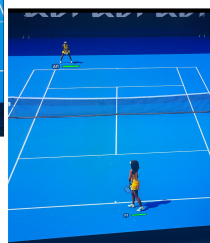
MyPlayer Attribute Limits:

- To try and make player as realistic as possible, ONLY TWO Attributes can have maximum 90 points. The rest of the attributes MUST be under 90 in order for that player to be eligible to participate in tournaments. As you can see the Tier 3 strings and platinum coach are included within the stats. (Picture below is an example) *This is subject to change as season progresses*



Serve:

- DO NOT serve from ANY WIDE position.
- ONLY SERVE from the CENTER LINE is allowed. I know this is a HUGE adjustment for some. In league play we try to play as fair as possible. Don't forget to adjust your serve everytime you serve.





Returns

- Lob Returns of Service are not allowed.
- Drop Returns of Service are not allowed.

L1/R1 Button

- L1 and R1 button is NOT ALLOWED for baseline rally shots. If you are caught using both L1 and R1 purposely for baseline shots you will be disqualified! L1 and R1 abuse will not be tolerated. (If you are able to record the abuse please do so)
- If you use the R1 button, you MUST come to the net and play the net.

Drop Shots:

- Some drop shots are allowed, but do not abuse them. In professional tennis, most players do not perform drop shots frequently(meaning every single shot of the match).
- NO RUNNING DROPSHOTS ALLOWED!
- If there is abuse of drop shots, report to the admin immediately. If you are able to record, please do so. The admins will decide consequences based on the situation.

Drop Volleys:

- There is an actual difference between a “drop shot” and a “drop volley”. The difference is that a drop shot occurs when a player lets the ball bounce. A drop volley is when a player plays a volley at net (does not let the ball bounce). Because the drop volley is an essential aspect of the volley game, there will be no limits on the amount of drop volleys performed.

Lobs:

- Offensive lobs used in baseline rallies are not allowed.


Player Switches:

- Switching players is not allowed within a tournament. Once a tournament is started, the same player must be used until it's conclusion

Match Format:

- Grand Slam matches are all 5 sets/ 6 games.
- All other tournaments will be 3 sets/ 6 games.

Walkover/Lottery Deciders:

- Admin will have the discretion to use walkover or lottery if there is not proper communication between players.
- 



Disconnections:

- If you are disconnected from a match; restart at the exact score line. For example: If the score is 4-3 then make the score 4-3 again (unless the leading player offers to restart the match).
- If players cannot agree to start the match back to the score line, then the administrators will resolve the matter as applicable.

Deadlines:

- Admin will set the deadline accordingly with each round. *i) If players feel like there is a circumstance in which they can't play within the deadline set; reach out to admin as soon as possible who will attempt to accommodate schedules.*

Administrators:

- Anthony Henderson: CEO and Founder; Head Administrator
 - Jalen Walker: Assistant Administrator
 - James M Smith: Consultant

